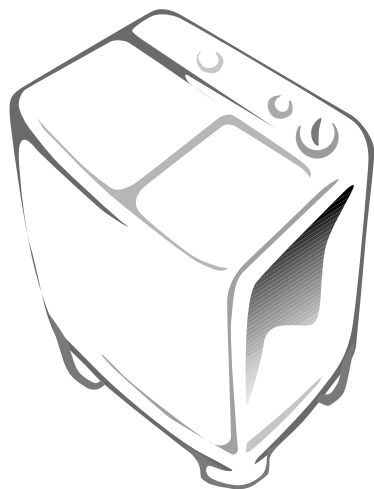




# WASHING MACHINE

Owner's Instructions  
SW-T65A1(P) / SW-T65B1(P) / SW-T65C1(P)

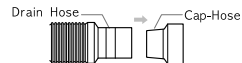


FEATURES	1
PRECAUTIONS	1
DESCRIPTION AND CLEANING OF PART	2
CLEANING THE MACHINE	2
CONTROL PANEL	2
WASHING PROCEDURE	3
To Wash	3
To Spin Dry	3
To Rinsing	3
Overflow rinse	3
Additional rinse	4
INSTALLATION	4
Location	4
Connecting the drain hose	4
Mounting the legs	4
LAUNDRY GUIDE	5
MAINTENANCE	5
TROUBLE SHOOTING	5

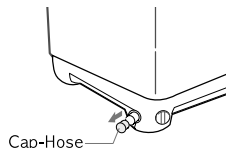
*Before operating the washing machine, please read this manual thoroughly, and retain it for future reference.*

## BEFORE USING THE WASHING MACHINE

- Remove the cap-hose from the drain hose.



- In the case of pump drained washer, remove the cap-hose from the drain hole.



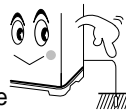
## PRECAUTIONS WHEN OPERATING

- Don't use excessively hot water. (50°C or more)**  
Plastic parts may be deformed or damaged. Also, clothing may be deformed or decolorated.
- Before washing, check all pockets.**  
If nails or pins remain in pockets, they may damage the washer or clothes.
- Close the water tap a little if the water pressure is too high.**
- Never splash water on the control panel.**
- Be sure to cover with the inner cover on laundry before spinning.**  
This prevents laundry from being tossed out and damaged.
- To avoid water splashes, close the wash tub lid.**
- Be sure lay the drain hose down.**  
(in case no drain pump)

## CAUTIONS

- Be sure that the washer is grounded.**

To avoid electrical shock, use a metal pipe for the ground connection. But, don't ground the washer with gas pipes or telephone lines to avoid to dangers of explosion or lightning strike.



- Do not put your hands into the spin dryer basket when it is spinning.**

Your fingers can be caught by spinning laundry and damaged.



- Never allow children to operate or play with the washer.**

Children playing with the washer may accidentally fall into the washing tub.



- Disconnect the power cord from the power supply when not in use.**

- Ventilation** opening must not be obstructed by carpeting when the washing machine is installed on a carpeted floor.

- If the supply** cord of this appliance is damaged, it must only be replaced by a repair shop appointed by the manufacturer, because special purpose tools are required.

- Warning** to avoid overfilling and damages this appliance must be filled with the operator present using a moderate water supply pressure only.

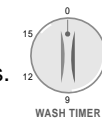
- Do not store or use gasoline or other flammable vapors and liquids in the vicinity of this or any other appliance.

- To avoid overfilling and damages this appliance must be filled with the operator present using a moderate water supply pressure only.

## CONTROL PANEL

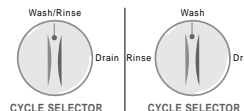
### 1. WASH TIMER

This is used to set the wash time, 1-15 minutes.



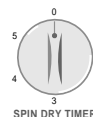
### 2. CYCLE SELECTOR

This is used to set the Washing/Rinsing or Draining.



### 3. SPIN DRY TIMER

This is used to set the spin time, 1-5 minutes.



### 4. WATER SELECTOR (FOR SW-50B1)

During washing, WATER SELECTOR KNOB should be selected. During spin rinsing, WATER SELECTOR KNOB should be selected.



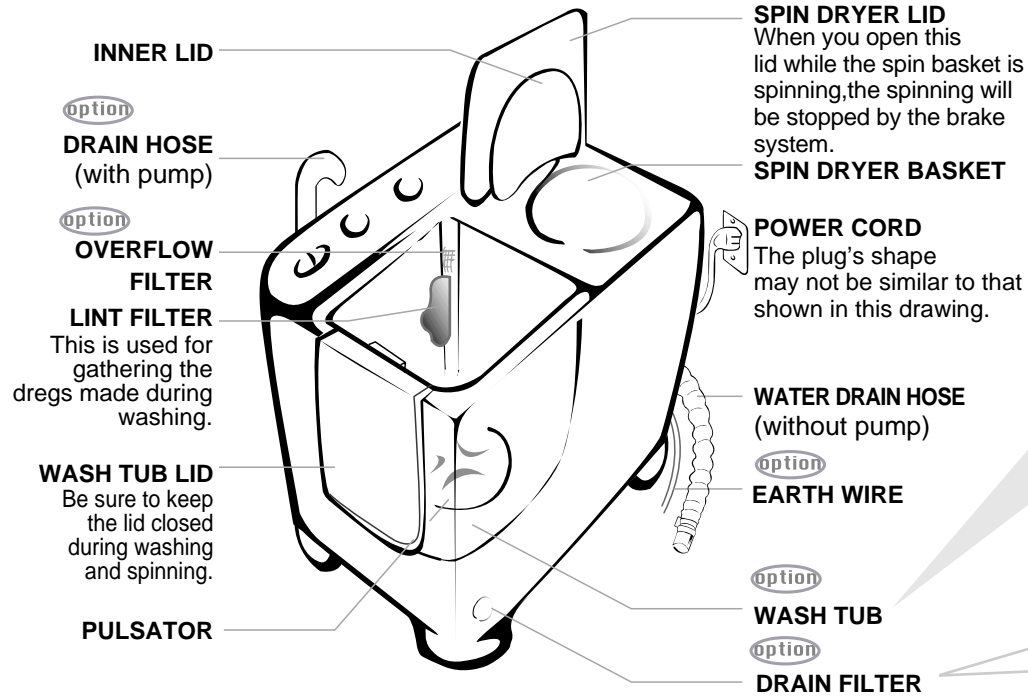
### 5. WASH SELECTOR

This is used to select wash action. You can wash laundry effectively by various methods.



## DESCRIPTION AND /CLEANING OF PARTS

※ 이 사용 설명서는 공용입니다. 구입하신 제품에 맞는 설명을 참고하세요.



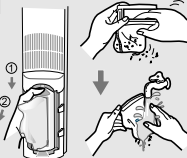
### OVERFLOW FILTER

- Pull the upper side of the overflow filter with your fingers into the holes in the direction of arrow as shown in the figure.



### CLEANING THE LINT FILTER

- If the dregs are piled up in the lint filter after finishing the wash, push down and pull it out as shown in the figure.
- Wash the filter net in water.



### OVERFLOW FILTER

- Pull the upper side of the overflow filter with two fingers inserted into hole 'A' in the direction of arrow as shown in the figure.

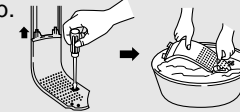


### CLEANING THE WASH TUB

First, fill water in the wash tub to 'L' level(세탁 조가 거의 잠길정도 약 4/5), then drain water from the wash tub simultaneously with operating wash cycle for 1~2 minutes. •Close the wash tub lid.

### CLEANING THE FILTER

- Pull the overflow filter out and take up the filter by removing 3 screws as shown in figure. Wash the filter and washing tub.



### CLEANING THE FILTER

- Push the strainer(filter) out and take up the filter as shown in figure. Wash the filter and washing tub.



### DRAIN FILTER

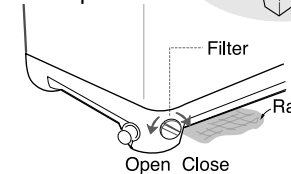
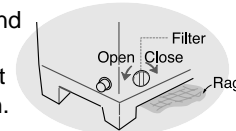
- In case of incomplete drain, disassemble the drain filter with screw driver(+), and remove lints from the filter as shown in the filter as shown in the figure.



### HOW TO CLEAN THE FILTER

(In case drain pump)

1. Place a rag under the washer filter not to wet the floor.
2. Rotate the filter counterclockwise and pull out the filter.
3. Remove dirts and rotate the filter clockwise until it locks in position.

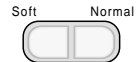


# WASHING PROCEDURE

## TO WASH

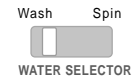
- Before starting to wash, proceed as follows, Connect the water supply hose and open the water tap.
  - Lay the drain hose down toward a sinkhole. (In case no drain pump)
  - Place the drain hose in sink or bath. (In case no drain pump)
  - Connect the power cord to the power supply outlet.

- Set the WASH SELECTOR KNOB to the desired mode.



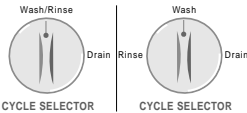
WASH SELECTOR

- Set the WATER SELECTOR KNOB to the desired mode. (FOR SW-T65B1, SWT65C1)



WATER SELECTOR

- Set the CYCLE SELECTOR KNOB to "WASH.RINSE". (in case drain pump WASH)

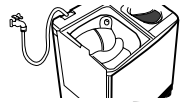


CYCLE SELECTOR

- Fill water in the wash tub and add the detergent.



- Load laundry in the wash tub and fill water to proper water level.



- Set the WASH TIMER 1-15 minutes.



WASH TIMER

- After washing, set the CYCLE SELECTOR KNOB to 'DRAIN' for drain.



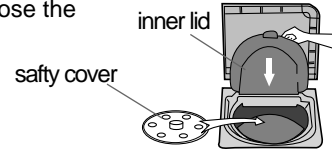
CYCLE SELECTOR

## TO SPIN DRY

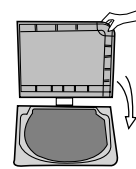
- Transfer the clothes into the spin basket and arrange the clothes evenly.



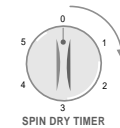
- Be sure to replace the safety cover and close the inner lid.



- Close the spin dryer lid.



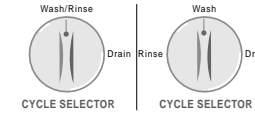
- Set the SPIN DRY TIMER 1-5minutes.



SPIN DRY TIMER

## TO RINSING

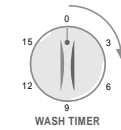
- Set the cycle selector KNOB to 'WASH.RINSE'. (In the case of drain pump 'WASH')



CYCLE SELECTOR

- Supply the proper amount of water so as not to delete one space overflow the top of the washing tub.

- Set the WASH TIMER to 2~3 minutes.



WASH TIMER

- Drain the water. Set the delete one space cycle selector KNOB to 'DRAIN'.

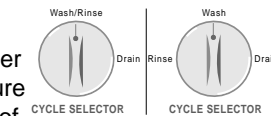


CYCLE SELECTOR

- Repeat this cycle until drain water is clean. (2~3 cycles)

## OVER FLOW RINSE

- Keep supplying water (adjust water pressure to ensure that the amount of water supplied does not exceed the amount of water drained.)



CYCLE SELECTOR

- Set the WASH TIMER 6~8 minutes.



WASH TIMER

- As soon as the WASH TIMER shuts off, turn off the water tap.



WASH TIMER

- Set the CYCLE SELECTOR KNOB to 'DRAIN'.



CYCLE SELECTOR

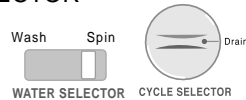
## INSTALLATION

### ADDITIONAL RINSE

1 After rinsing you can select this course for more effective rinse (Don't just select this course for rinse.) Load the laundry evenly into the spin basket.



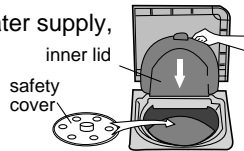
2 Set the WATER SELECTOR KNOB to SPIN and CYCLE SELECTOR KNOB to 'DRAIN'.



3 Supply water for about 1 minute. Adjust the water flow to prevent overflow from the wash tub.

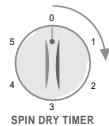


4 After completing the water supply, cover the laundry with safety cover and close the inner lid.



5 Close the spin dryer lid.

6 Set the SPIN DRY TIMER 2~3 minutes.



### LOCATION

**Leave some space of**

at least 15cm between the washing machine and the wall.

**Place the washing machine on a sturdy flat surface.**

If the washer is placed on an uneven or weak surface, noise or vibration may be occurred. (Allowable is 2°)

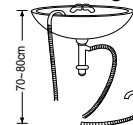
**Never install the washing machine near water.**

Do not place the washing machine in steamy rooms or where the washing machine is directly exposed to rain. Moisture may damage electrical insulation and cause an electrical shock to occur.

**Avoid direct sunlight or heating devices.**

As plastic and electrical components are affected by direct heat, never place the washing machine near heaters, boilers, etc., or under direct sunlight.

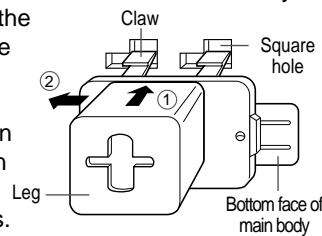
Install the drain hose about 70~80cm above the ground for pump model.



### MOUNTING THE LEGS option

Lay down the washer with its back facing downward. Insert four legs into the leg mounting sections of the base corners of the main body.

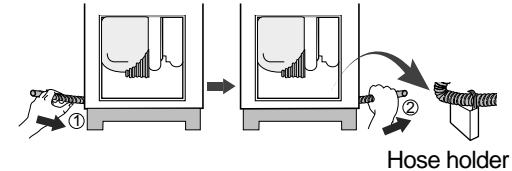
Insert the claw of the leg with the square hole of the leg mounting section, and push the leg in the arrow direction as shown in the figure until it clicks.



### CHANGING THE POSITION OF THE DRAIN HOSE option

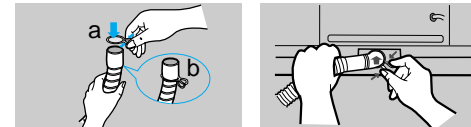
Before attempting to change the position of the drain hose, disconnect the plug from the outlet.

1. Route the drain hose inside the machine.
2. Take out the drain hose from the opposite hole and insert the drain hose into the hose holder.



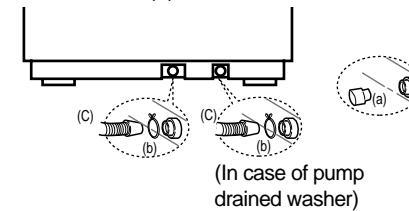
### CONNECTING THE DRAIN HOSE option

▶ After attaching the connector ring(a), insert the drain hose(b) in the draining direction.



### CONNECTING THE DRAIN HOSE option

- ▶ 1. Before connecting the drain hose, remove the cover (a) from the drain hole.
2. After pressing the joint ring (b), insert the drain hose(c) to drain direction.



## LAUNDRY GUIDE

### WASHING TIME

TYPE OF CLOTHING	WASHING TIME	WASHING SELECTION
Extremely soiled heavy fabric	10 to 15 minutes	NORMAL
Linen, cotton, etc.	8 to 10 minutes	
Ordinary clothes (underwear, etc)	7 minutes	SOFT
Slightly soiled synthetic fiber	2 to 5 minutes	
100% wool, mixed wool knitting, thin synthetic fiber with tags indicating hand washing	2 to 5 minutes	

### SPIN DRY TIME

TIME	TYPE OF FABRIC
1 min.	Thin (synthetic fiber)
1~2 min.	wool
3~5 min.	cotton
5 min.	thick (cotton)

### DETERGENT

The amount of detergent is average. Follow the instruction printed on the package for amount of detergent. Choose the amount of detergent according to the fabric type.

AMOUNT OF DETERGENT	WATER LEVEL
30g	Low (30L)
40g	Medium (40L)
50g	High (50L)

### DETERGENT option

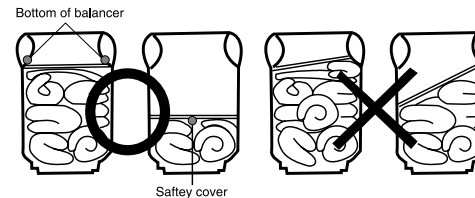
In case the water level is at "High", **-H-** amount of water is 42L

Follow the directions printed on the package for amount of detergent. Choose the amount of detergent depending on the fabric type and water level.

## MAINTENANCE

### TO LOAD THE LAUNDRY INTO THE SPIN BASKET.

Press the laundry evenly and put the safety cover into the spin basket as shown in the figure.



### TO RETRIEVE THE CLOTHING THAT HAS FALLEN BETWEEN THE BASKET AND TUB.

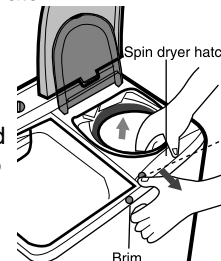
For safety reason, pull the power supply plug out of the socket.

1. Unscrew the spin dryer hatch.

2. The spin dryer hatch is fixed to the brim by the concave and convex parts at two places. Expand the concave and convex parts, and pull up the spin dryer hatch to remove it.

3. Retrieve the clothing.

4. Close the spin dryer hatch. Push the hatch firmly until the catch at the front is securely attached.

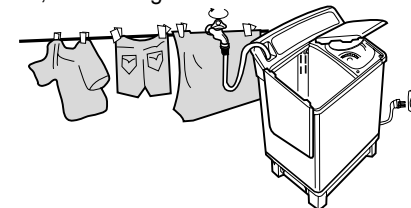


## TROUBLE SHOOTING

TROUBLE	CHECK POINT
The washing machine does not work.	Check that the power cord is properly connected to a power outlet. Is there a power failure?
Clothes do not move freely.	Is the machine overloaded?
Incomplete spinning	Is the laundry arranged evenly?
Incomplete draining	Is the filter clogged with lint? • See "Cleaning of parts".
The spin dryer basket will not run.	Is the spin dryer lid closed completely? Are laundry items (socks, etc.) falling out of the spin dryer basket and clinging to the axle? • See "To retrieve..." on page 5.

### AFTER OPERATION

1. Remove the power cord from the outlet.
2. Take out the laundry.
3. Close the water tap and disconnect the water supply hose.
4. Clean the washing machine.
  - Periodical cleaning will extend the life of your washing machine.
  - Do not spray the unit water or use tinner, benzene, alcohol etc, for cleaning it.



### CLEANING THE WASHING MACHINE

Wipe off stains on the cabinet and operation pane with a soft cloth. Neither use benzene, thinner, cleanser, or wax, nor scrub the washing machine with a brush. Painted surfaces or plastic parts will be damaged.

## SPECIFICATIONS

DIMENSIONS	SW-T65A1P	776 × 434 × 844 mm
	SW-T65B1P	776 × 444 × 953 mm
	SWT65C1P	776 × 434 × 941 mm
WATER PRESSURE	0.05~0.78 MPa(0.5~8.0 Kg · f/cm <sup>2</sup> )	
WEIGHT	SW-T65A1(P)	24Kg(26Kg)
	SW-T65B1(P)	26Kg(28Kg)
	SWT65C1(P)	26Kg(28Kg)
EXTRACTION EFFICIENCY	50 %	
STANDARD QUANTITY OF WATER	50 l	
RATING TIME	Washing 1 Hour / Spinning 15 minutes	